



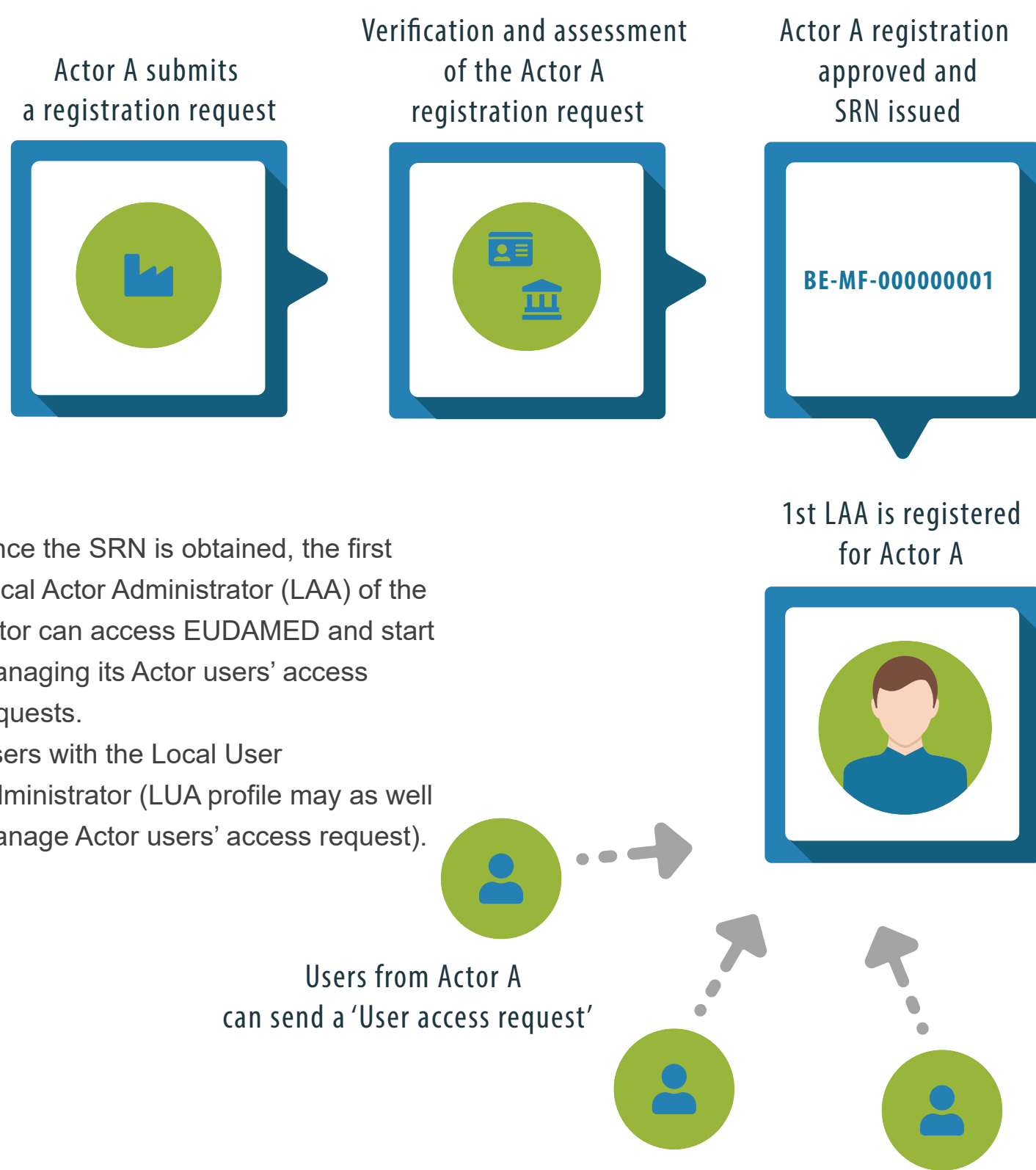
European
Commission

EUDAMED

European database on medical devices

USER ACCESS REQUESTS

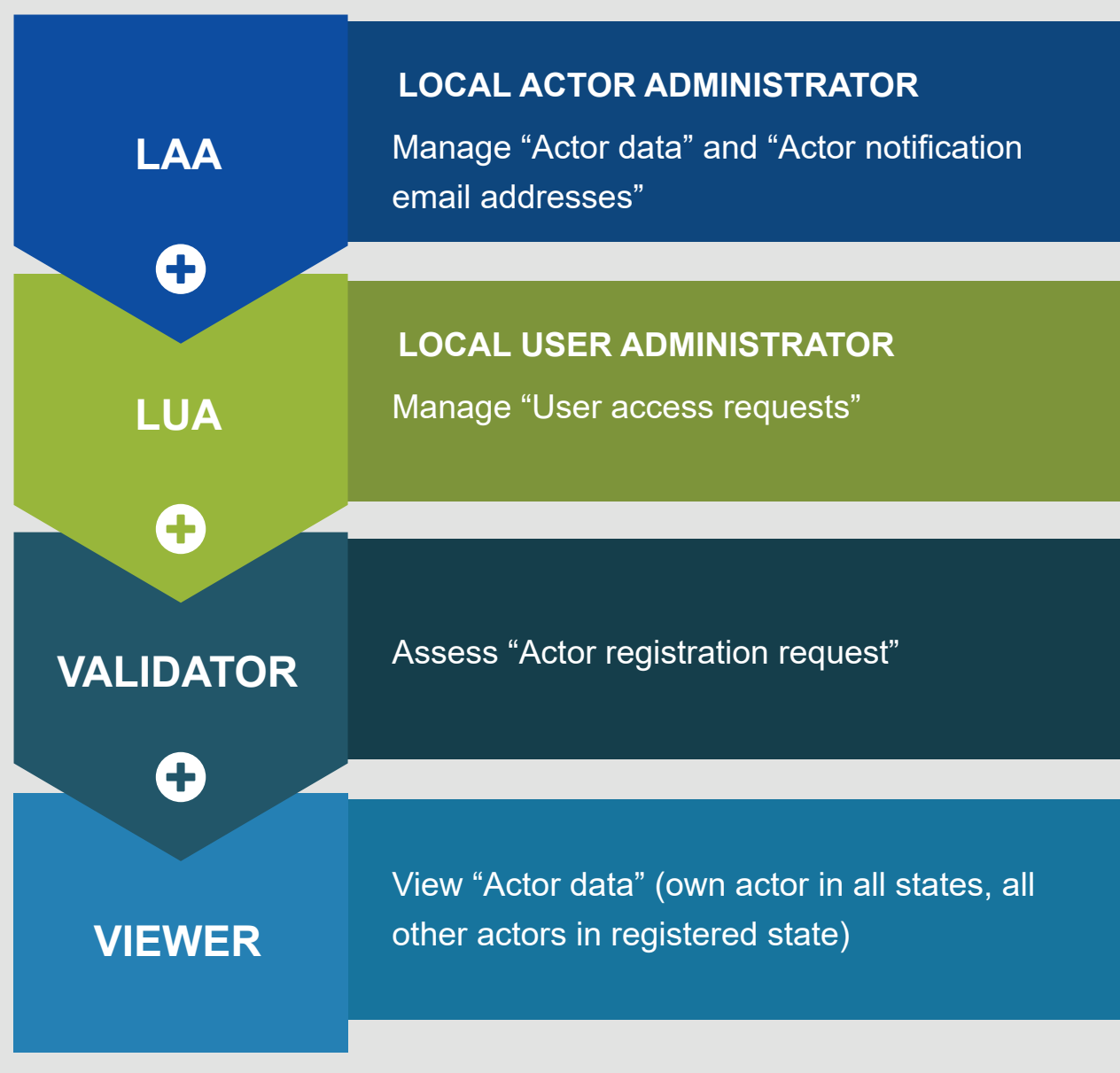
Once an actor is registered in EUDAMED with its first Local Actor Administrator (LAA) and has obtained an SRN, more **users** of this actor can **request access** to EUDAMED.



PROFILES' HIERARCHY

How does the grants/rights work in EUDAMED?

COMPETENT AUTHORITIES



PROFILES' HIERARCHY

Higher level profiles contain all lower level grants/rights.

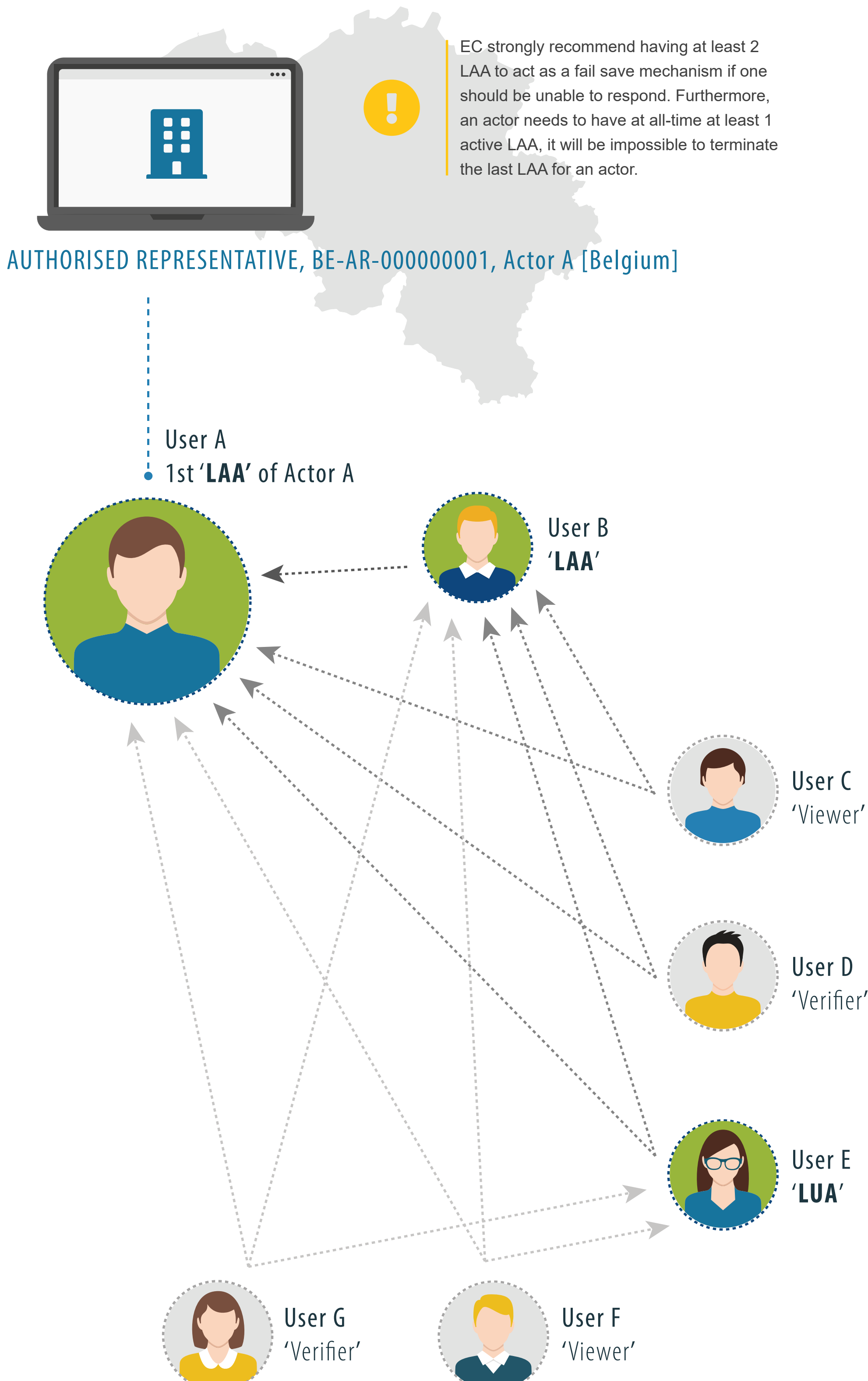
The LAA is the highest profile and contains the grants/rights of all the lower profiles.

The LUA contains the grants/rights of its lower profiles, etc.

AUTHORISED REPRESENTATIVE	MANUFACTURER	SYSTEM & PROCEDURE PACK PRODUCER	IMPORTER
LAA	LAA	LAA	LAA
LUA	LUA	LUA	LUA
Verifier Verify "Actor registration request" and submitted mandates associated to their actor	Mandate manager Manage its "Mandates" (Only for Non EU-MF)	Viewer	Linker Manage its "Link with Non EU-MF"
Viewer	Viewer		Viewer

USER ACCESS REQUEST PROCESS

How to get access to EUDAMED for a user of an actor already registered



医课汇
公众号
专业医疗器械资讯平台
WECHAT OF
HLONGMED



hlongmed.com
医疗器械咨询服务
MEDICAL DEVICE
CONSULTING
SERVICES



医课培训平台
医疗器械在线培训
WEB TRAINING
CENTER



医械宝
医疗器械知识平台
KNOWLEDG
ECENTEROF
MEDICAL DEVICE



MDCCPP.COM
医械云专业平台
KNOWLEDG
ECENTEROF MEDICAL
DEVICE